

Network Expander User Manual



Technical parameters

Network Signal: ART NET

TCP/IP firmware update:

U disk or network

Number of signal channels: 4/8 DMX512

inputs or outputs

Display mode: LCD menu is optional in

Chinese or English

Working Voltage: AC 100V ~ 240V 47/60HZ

Size: Standard 19-inch rack

type (1U)

Weight: GW: 2.08KG NW: 2.3KG

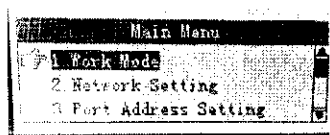
Button Function Introduction

MENU Used for menu entry and exit

ENTER 1.Used to confirm menu options. 2.Used to move the Settings option to the right when setting IP and subnet mask.

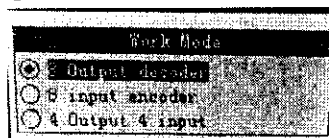
UP 与 DOWN 1. Move menu options 2.Add or subtract the current value from the IP address and subnet mask status.

1. Set device working mode



4/8 channel decoding mode

(4/8 outputs)



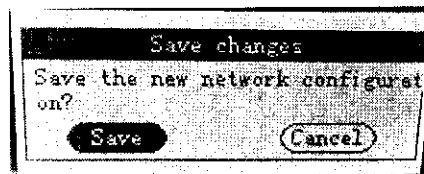
4/8 channel coding mode

(4/8 inputs)

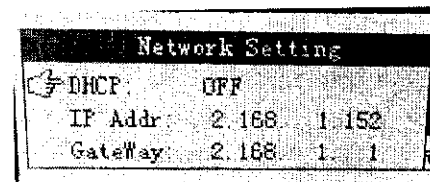
Instructions:

1. 4/8 input mode is mainly used to encode DMX512 signal into ART NET signal
2. 4/8 output decodes ART NET signal to DMX512 signal (common extender function)

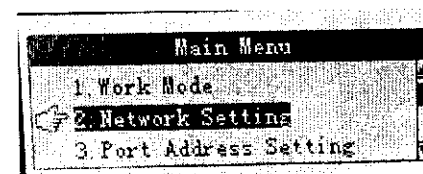
2 Set device working IP address



Press MENU to go to MENU options, select Network Settings, and press ENTER to go to options

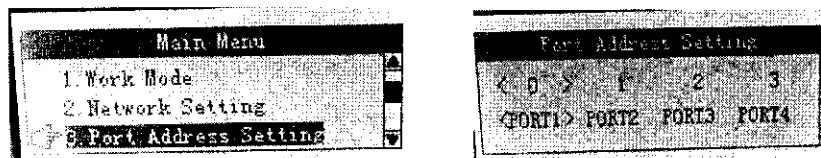


After entering the IP setting, press ENTER to move to the right, and set the IP value through UP and DOWN



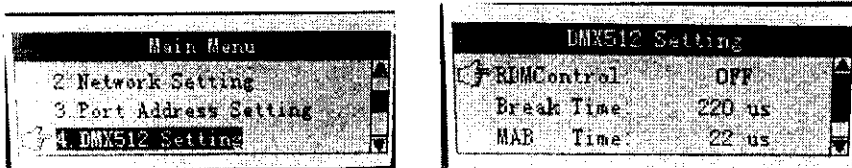
After setting the IP value, press the MENU key to save setting, and press the ENTER key to save the current setting and return to the upper-level MENU

3 Port Address Setting



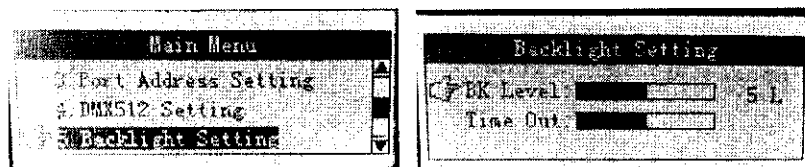
After entering the port setting, press ENTER to move to the right, and set the port value through UP and DOWN

4 DMX512 Setting



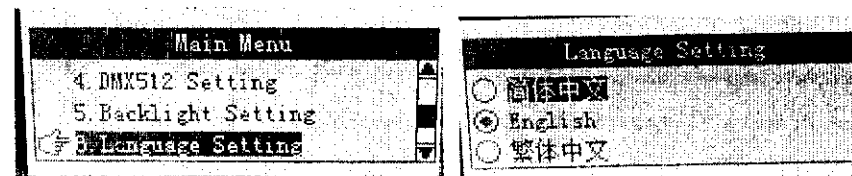
RDM Enable/Disable option. When the RDM function is not used, it is set to disable. Other default

5 Backlit Settings



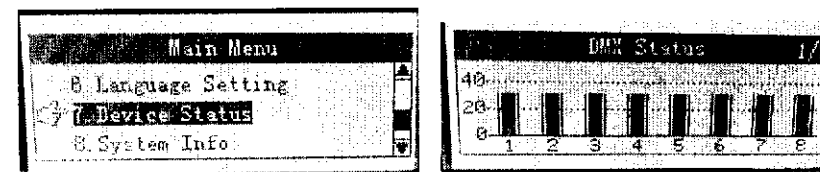
After entering the backlight setting, press ENTER to move to the right, and set the brightness of the backlight through UP and DOWN

6 Language selection



Select the language option, and then press ENTER to ENTER the option. Set the required language through UP and DOWN Press ENTER to save the current Settings and return to the previous menu

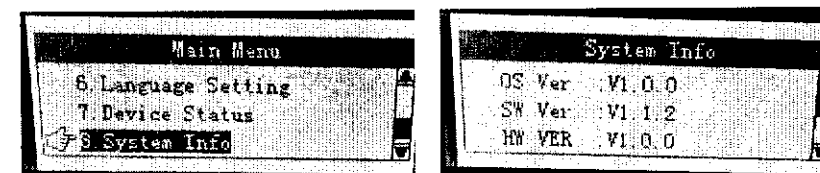
7 Device state



Select the device status and press ENTER to view the network output/input status

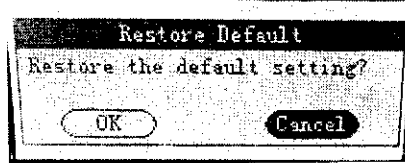
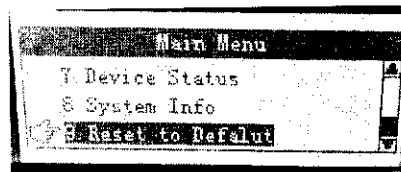
Note: In the network coding state, it is displayed as the external input DMX512 signal, and in the decoding state, it is displayed as the network signal sent from the console

8 System information



Select the system information and press ENTER to view the software and hardware versions

9 Factory Data Reset



Select Restore factory Settings and press ENTER to ENTER the options. Press UP and DOWN to complete the required state

(Note: Confirm that it is restored to factory condition, and cancel without making any changes)